

## Visbuild – Kitsets – Plan Structuring

This procedure describes the ways to Structure Plans in Visbuild using Sections, Images and Layouts to allow the best presentation of Plans and Pricing to a Customer.


### To Structure Plans;

Structuring Plans is done from the Visbuild’s Sections, Images and/or Layers fields.

### Quick Flow;

Visbuild > [Add Section] > [Add Image(s)] > [Add Layers]

Visbuild > [Add Section] > [Add Image(s)] > [Add Section] > [Add Image(s)] > [Add Layers]

1. To access Visbuild, press the **[Edit Plans]** button  of Quote to open a Visbuild Browser Tab

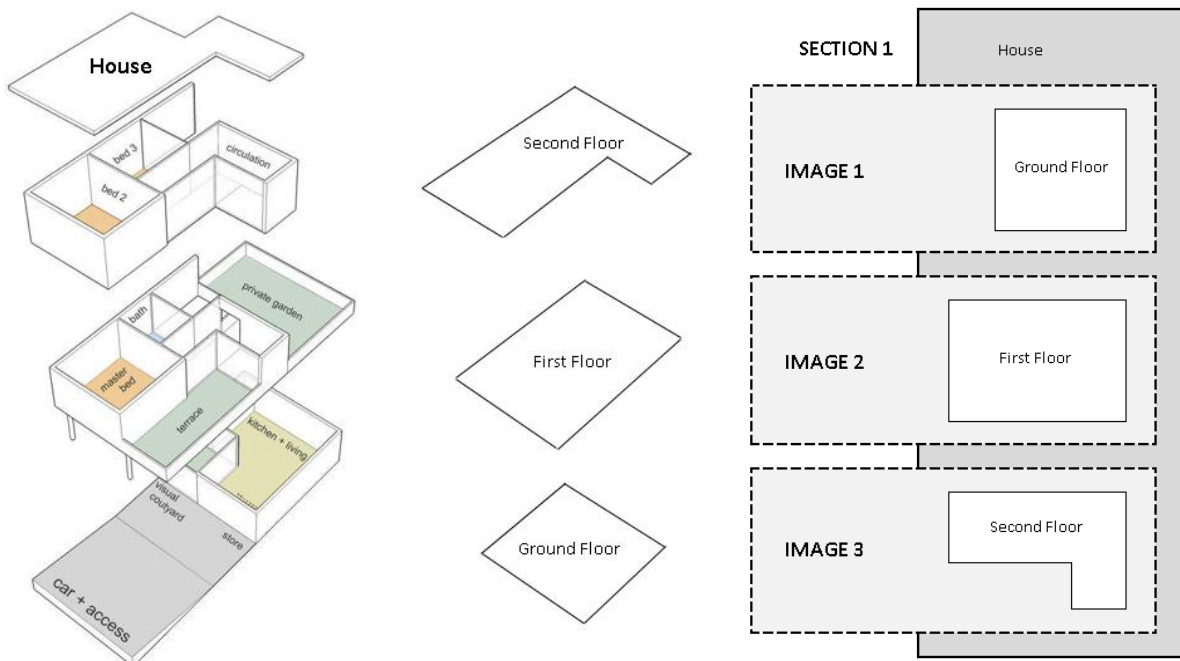


### SECTIONS & IMAGES:

A Section is generally; for a single Residential Dwelling, OR for a part of a Commercial Development, I.E. “Common Services”, “Level 1”, “Level 2” etc.

Residential Dwelling;

View of a House and the “Level Floor” Plans;



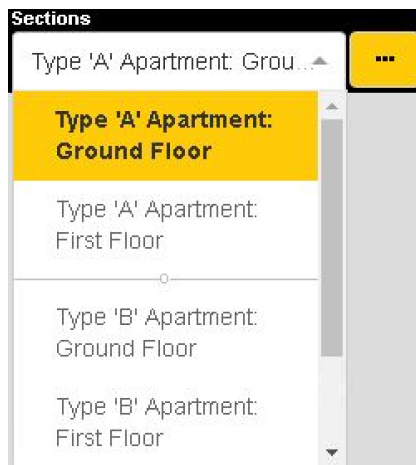
In this example the Residential Dwelling “House” is a “Section”, and the “Level” Floor Plans are added as “Images” to the “Section”.

For the above example, the Katipolt Quote PDF on “Include Plans” can display 3 Plans; “Ground Floor”, “First Floor” and “Second Floor”.



How this looks when entered in to Visbuild;

Press on an Edit Section's [+] button  to add a new Image ("Level" Floor Plan).

When quoting, further dwellings can be entered as another Section, I.E. Section 1 = "Type 'A' Apartment". Section 2 = "Type 'B' Apartment". If the Apartment has multiple Floor Levels, each "Level" Floor Plan is added to that Apartment's Section as "Images".



Because a Section on the Quote can have multiple quantities, you can add a quantity for the number of "Type 'A' Apartments" or number of "Type 'B' Apartments".

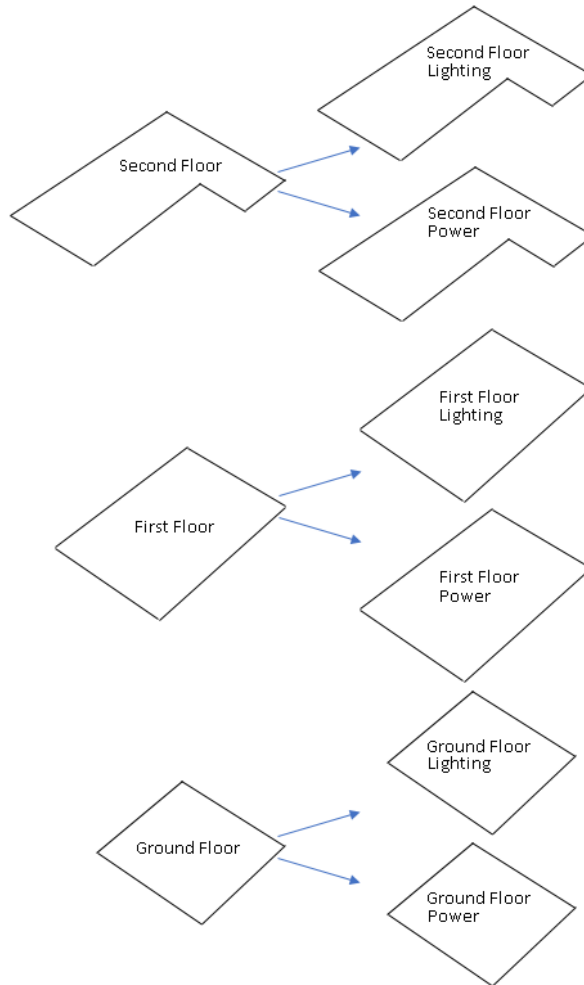
SECTION NAME	COST	PRICE	QTY	SECTION COST	SEC
  Type 'A' Apartment	\$21.57	\$40.76	1	\$21.57	

See next page...

**LAYERS:**

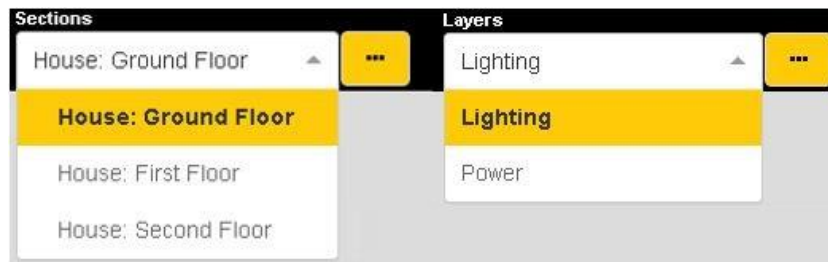
Layers added flow across all Sections / Images.

A Layer is generally; for a Trade Function, I.E Lighting, Power etc, OR for multiple Trades, I.E. Electrical, Plumbing etc



For the above example, the Katipolt Quote PDF on “Include Plans” can display 3 Plans; “Ground Floor”, “First Floor” and “Second Floor”, on selecting “Split Plan By Layers”, the Katipolt Quote PDF can display 6 Plans; “Ground Floor” Lighting / Power, “First Floor” Lighting / Power and “Second Floor” Lighting / Power.

How this looks when entered in to Visbuild;



From the Quote PDF, by selecting “Split Plan By Layers”, then printing “Pages: X to X”, you could for example print off the “Ground Floor” Lighting Plan only.